

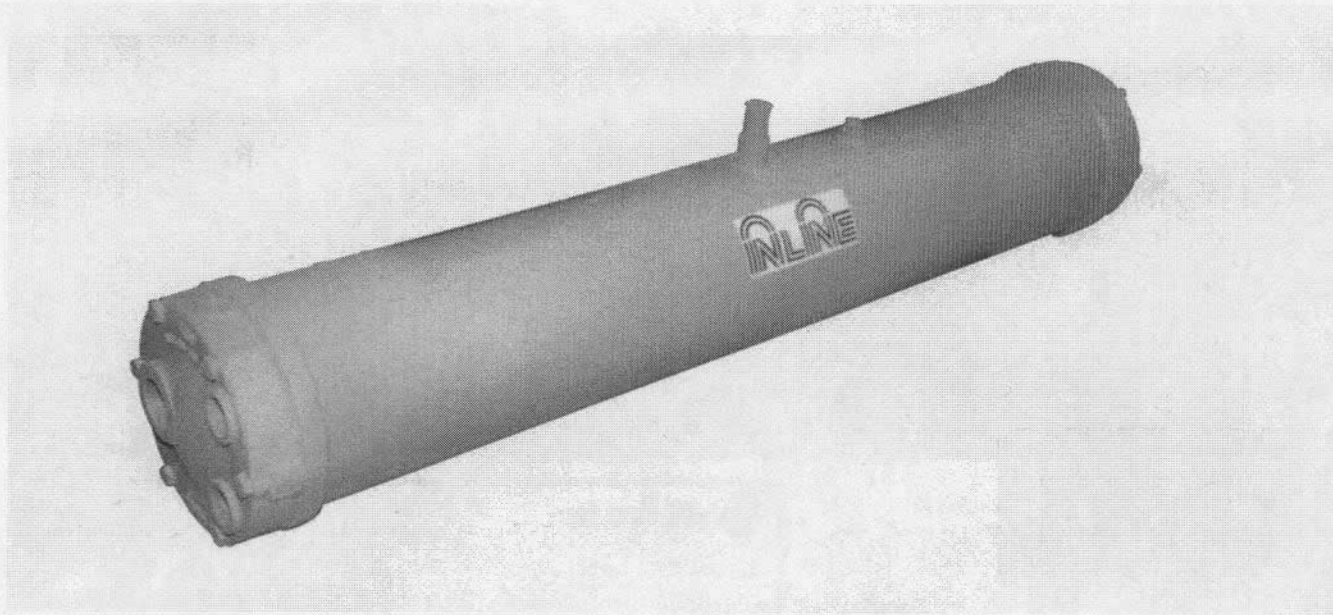
DX CHILLERS



D-X chillers: Capacity ranges 5-300 kW. Dual refrigeration circuits from 200 kW capacity. Superior quality chillers with sand blasted and galvanised shell, copper, stainless steel or titanium tubes. Fitted with cast iron heads.

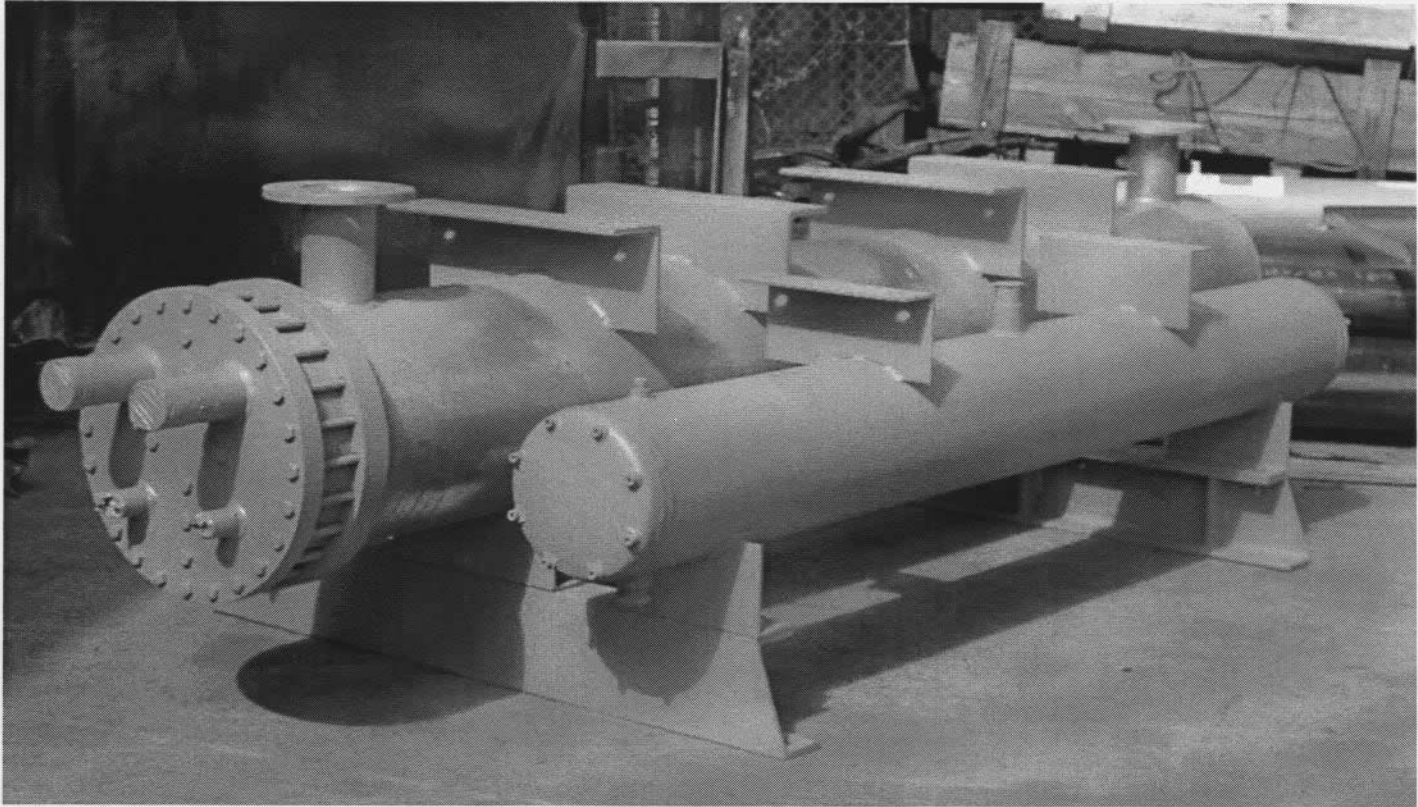
Water side of chillers can pass quite large particles without obstruction, thus maintaining efficiency, an important factor for long life of chillers.

WATER CONDENSER



Condensers: Capacity ranges 1-500 kW. Available in fresh water or marine versions. Manufactured in choice of copper or copper/nickel tubes to International Design Standards. Tubes have extended surface areas. Inline-Brolga heat exchangers are supplied with removable heads, which provide access for inspection, cleaning and replacement.

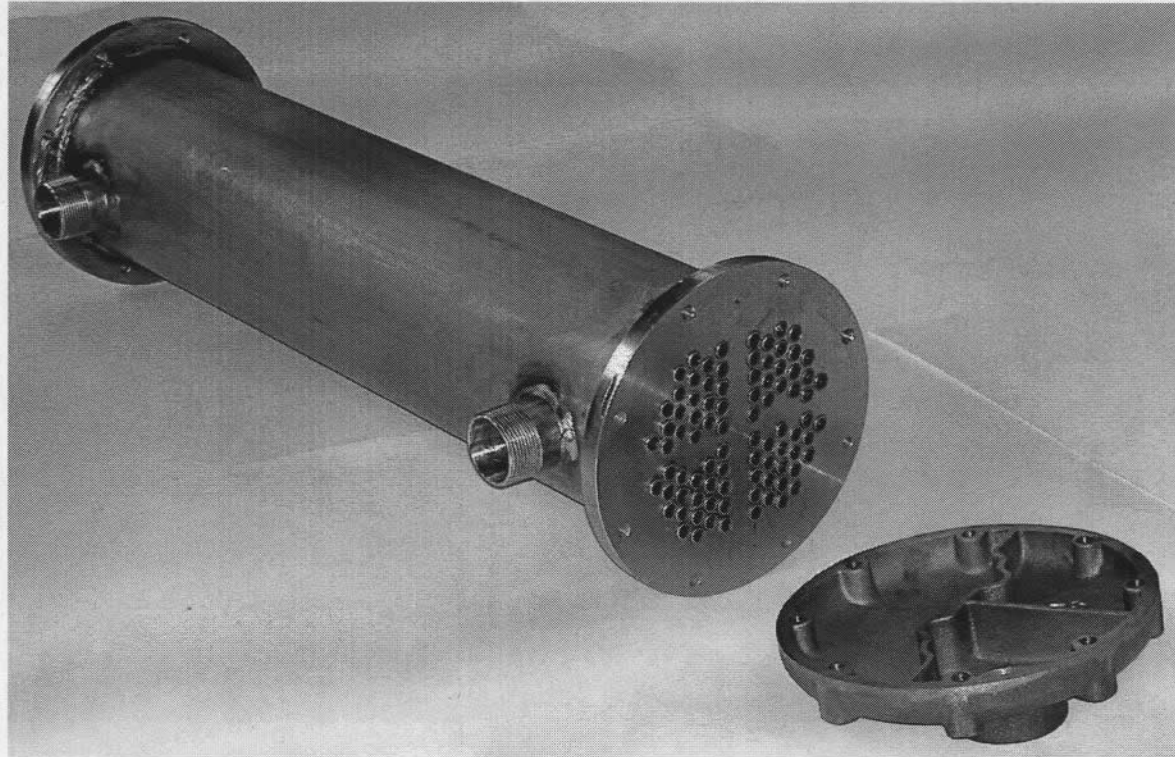
PACKAGES



Packages: Capacity ranges 100-300 kW

Inline-Brolga also supplies packages of middle range capacity, consisting of D-X chiller, water cooled condenser and recommended frame mounted compressor. This package has limited piping and does not include any controls or electrical work.

SPECIAL HEAT EXCHANGERS



Special Heat Exchangers

Inline-Brolga also designs and supplies a variety of special heat exchangers such as oil coolers, economisers and heat exchangers for special applications.

These can be custom manufactured from a selection of materials to customer requirements.



COOLING SOLUTIONS

204 Tooheys Mill Rd. Nashua NSW 2479

Ph: 02 6629 1588 Fax: 02 6629 1599

Email: coolingsolutions@bigpond.com